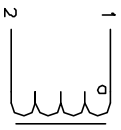


The information contained in this drawing is the sole property of CWS Coil Winding Specialist. Any reproduction in part or whole without written permission of CWS Coil Winding Specialist is prohibited.

REVISION HISTORY

REV	ECN	DESCRIPTION	SIGN & DATE		
			BY	DATE	CHK
C		PRODUCTION RELEASE	TDK	10/15/05	JLJU



SCHEMATIC

7 BUILT TO ROHS COMPLIANCE AND LEAD FREE.

USING A PERMANENT MARKING METHOD

6 MARK PART NUMBER AND REVISION, IF APPLICABLE
IF NEEDED, WRAP INDUCTOR WITH GLASS TAPE

TO THE CORE

MUST REST FLAT ON PCB. LEADS MUST BE TANGENT

FLUSH WITH THE COIL EDGE, AS SHOWN (I.E. COIL

5 REMOVE INSULATION AND TIN LEADS 0.50 INCH

WIND COILS EVENLY SPACED AROUND THE CORE

4 CONSTRUCTION:

HI-POT TEST FOR WINDING TO CORE ISOLATION = 500VDC MIN

CURRENT RATING : 22 AMPS, 40 °C TEMP. RISE, NO AIR FLOW

DCR = 2.95 MILLI-OHMS MAX.

DC BIASED = 22.0 AMPS, INDUCTANCE = 4.0 UH

DC BIASED = 22.4 AMPS, INDUCTANCE = 4.0 UH

3 INDUCTANCE = 5.0 UH +-10% @ LOW DC BIAS, 1 KHZ, 250mv SPECIFICATIONS 25°C.

WIRE: UL RECOGNIZED 200°C RATED MAGNET WIRE

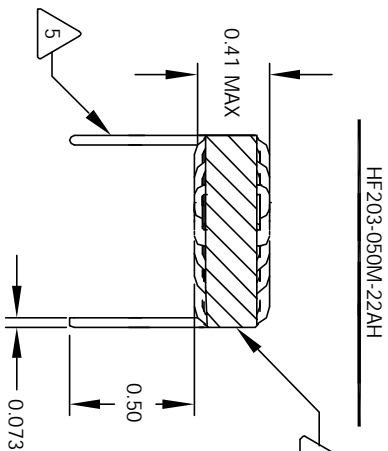
CMS BYTEMARK OR OTHER APPROVED PART

2 CORE: COATED HIGH FLUX TOROIDAL CORE

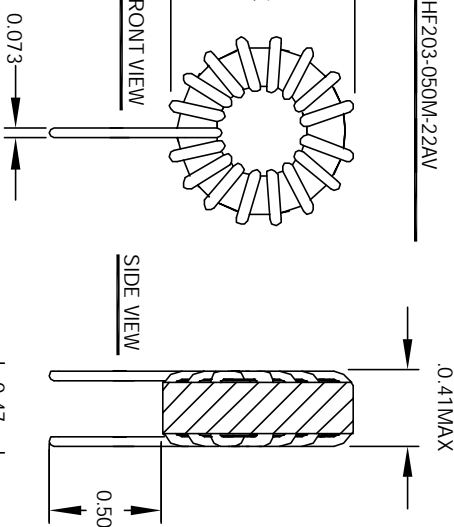
RATING CLASS B (130°C MIN.) REQUIRED

1 MATERIAL: UL RECOGNIZED 94V-0 FOR FLAMMABILITY

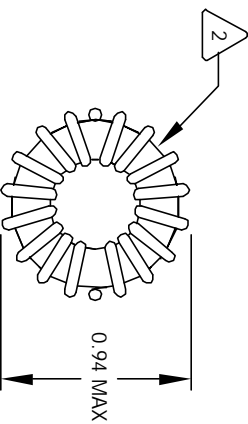
NOTES: TOROIDAL POWER CHOKER. ALL DIMENSIONS IN INCHES
READ FROM BOTTOM UP.



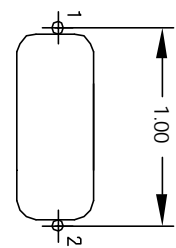
FRONT VIEW



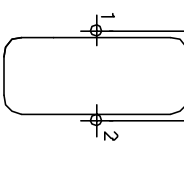
SIDE VIEW



BOTTOM VIEW



MOUNTING HOLES PATTERN



MOUNTING HOLES PATTERN

UNLESS OTHERWISE SPECIFIED
DIMENSIONING AND TOLERANCE PER ANSI Y14.5M
ALL DIMENSIONS ARE IN INCHES AND (UNLESS STATED)
TOLERANCE INCHES: .XX = ±0.005 .XY = ±0.015 .X = ±0.030
TOLERANCE METRCS: .XX = ±.127 .XY = ±.38
ANGLE PROJECTION
DO NOT SCALE DRAWINGS

CODE IDENT	MFG. P/N	DESCRIPTION	ITEM NO.
AUTOCAD	X		
SOLIDWORKS			
SIGN	DATE	PARTS LIST	
DRAWN	TDK	10/15/05	
DESIGN	JLJU	10/15/05	
ENGR.	KSUM	10/15/05	
APPR.	JLJU	10/15/05	
SIZE	DWG. NO.	TITLE	
B	HF203-050M-22A	Toroidal Power Chokes	
SCALE	2=1	REV C	

CWS Coil Winding Specialist. 353 WET GROVE AVE Bldg 7, ORANGE, CA, 92685
--